

Rewilding and Tree Planting

Environment Forum

5th December 2023





Forty Hall Estate Beaver reintroduction

- All signs indicate that the new arrival has settled in very happily



Conservation Grazing Forty Hall

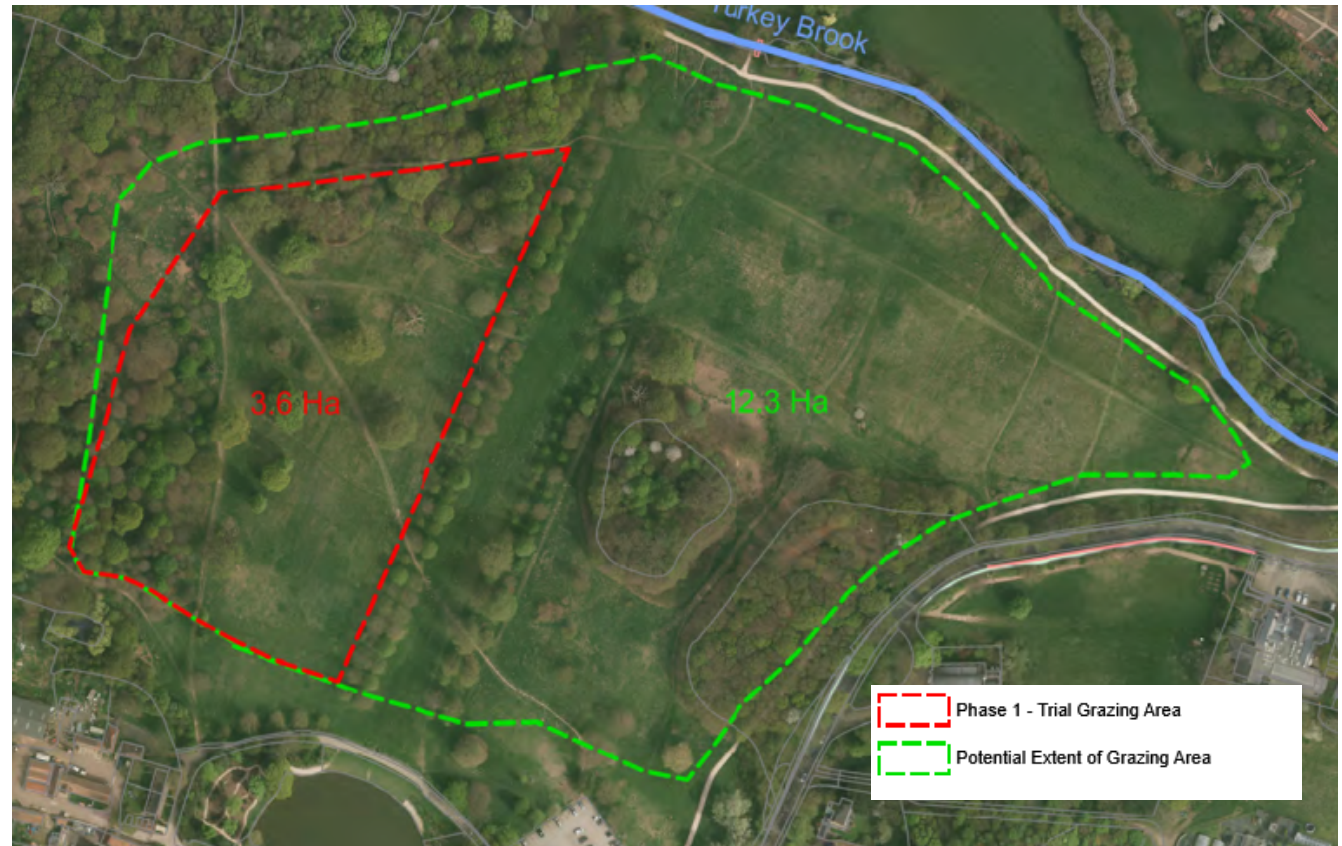
- 12 month trial commenced in Summer 2023

Capel Manor College



Conservation Grazing Forty Hall

- Key benefits:
 - Promotes improved diversity of grass species
 - Restores ecological processes – benefits insects such as ants and beetles, plus birds and small mammals
 - Restoration of historical land management practices
 - Reduction in the use of heavy machinery (including reduced risk of damaging archaeological artefacts within the Forty Hall Scheduled Ancient Monument site)
- Next steps:
 - Expand grazing area at Forty Hall





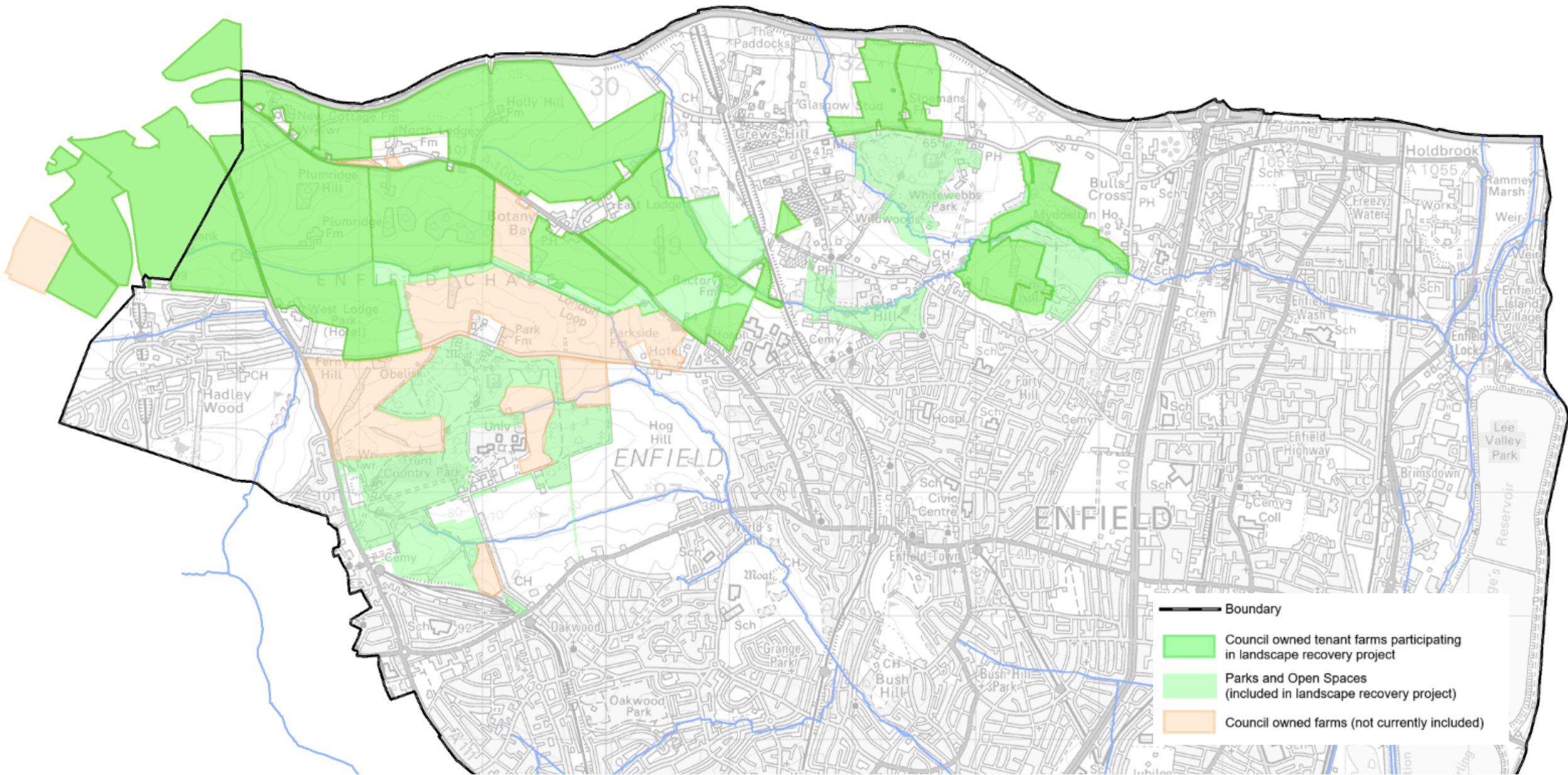
Rural SuDS Rectory Farm

- Ponds and wetlands are under construction as part of the Natural Flood Management programme



Rural SuDS Rectory Farm

- Ponds and wetlands are under construction as part of the Natural Flood Management programme



Enfield Chase Landscape Recovery

- 18 month Project Development Phase commenced in Summer 2023

Enfield Chase Landscape Recovery

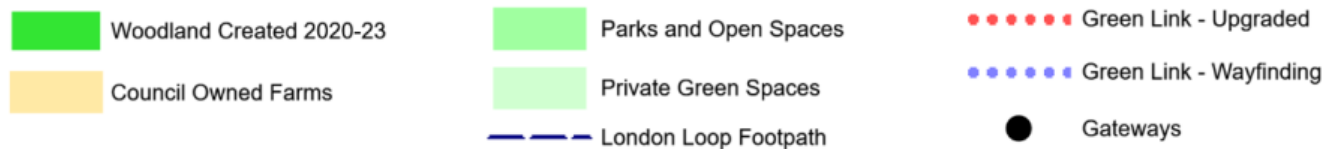
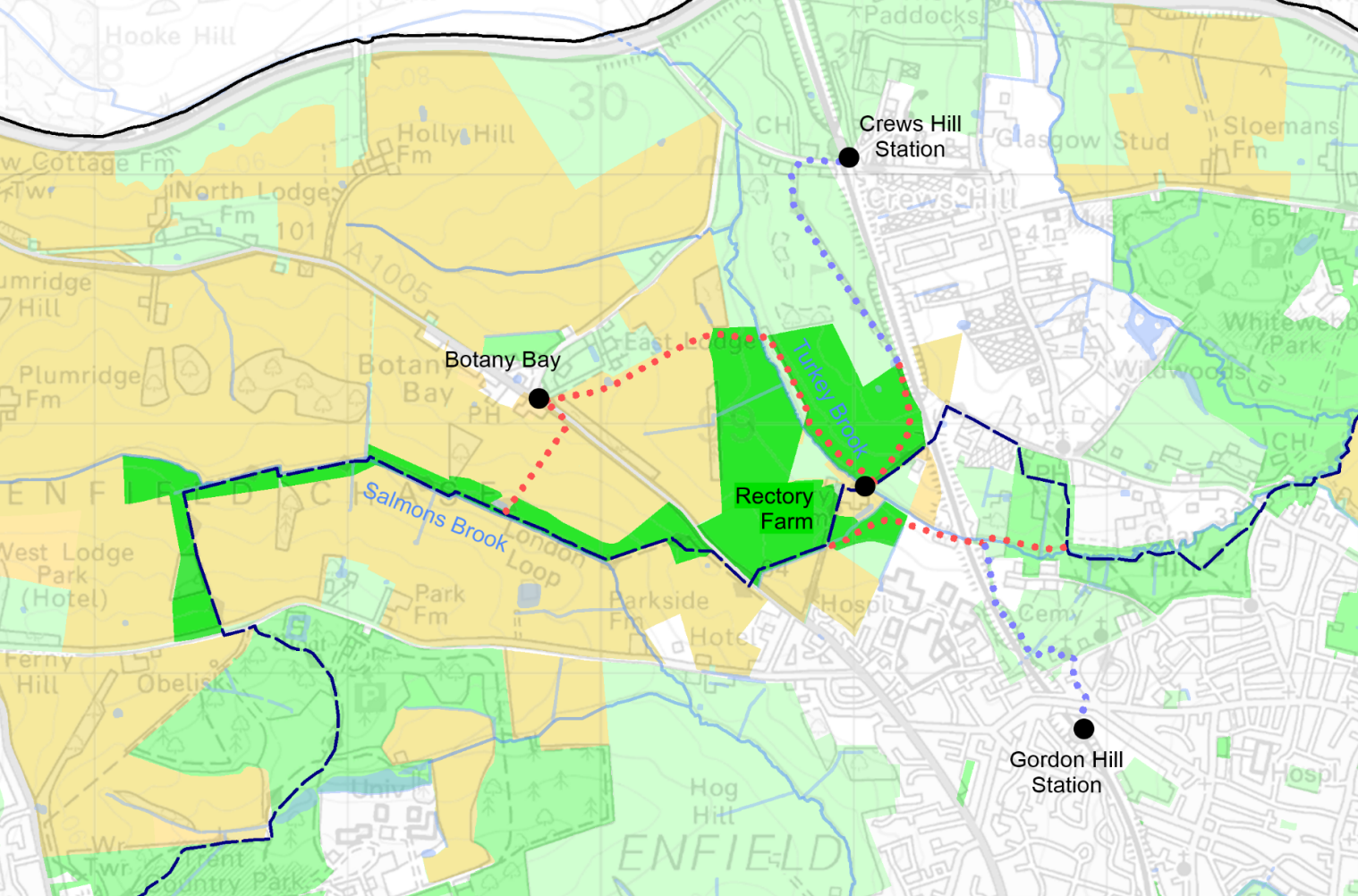
- Landscape Recovery is one of 3 new Environmental Land Management Schemes (ELMS) supported by Defra:
 - Sustainable Farming Incentive
 - Local Nature Recovery
 - Landscape Recovery (minimum 500 hectares)
- The **Enfield Chase Restoration Project** has been selected as a 2-year pilot to develop a Landscape Recovery scheme
- Enfield Council's rural landholdings comprise over 1,500 hectares of land in the north-west of the borough
- The ambition is to restore a significant proportion of this land for nature to benefit people and wildlife
- We are working with farmers to identify opportunities to restore nature alongside farming
- Partners include Thames21, The Rivers Trust, Environment Agency and Herts and Middlesex Wildlife Trust
- Measures under consideration include:
 - Restoring the natural courses and condition of rivers and streams
 - Reconnecting floodplains
 - Creating a mosaic of habitats
 - Restoring wetlands
 - Creating and improving woodlands





Enfield Chase Woodland Creation

- Proposals for the next phase of tree planting are in development



Enfield Chase Eastern Gateway

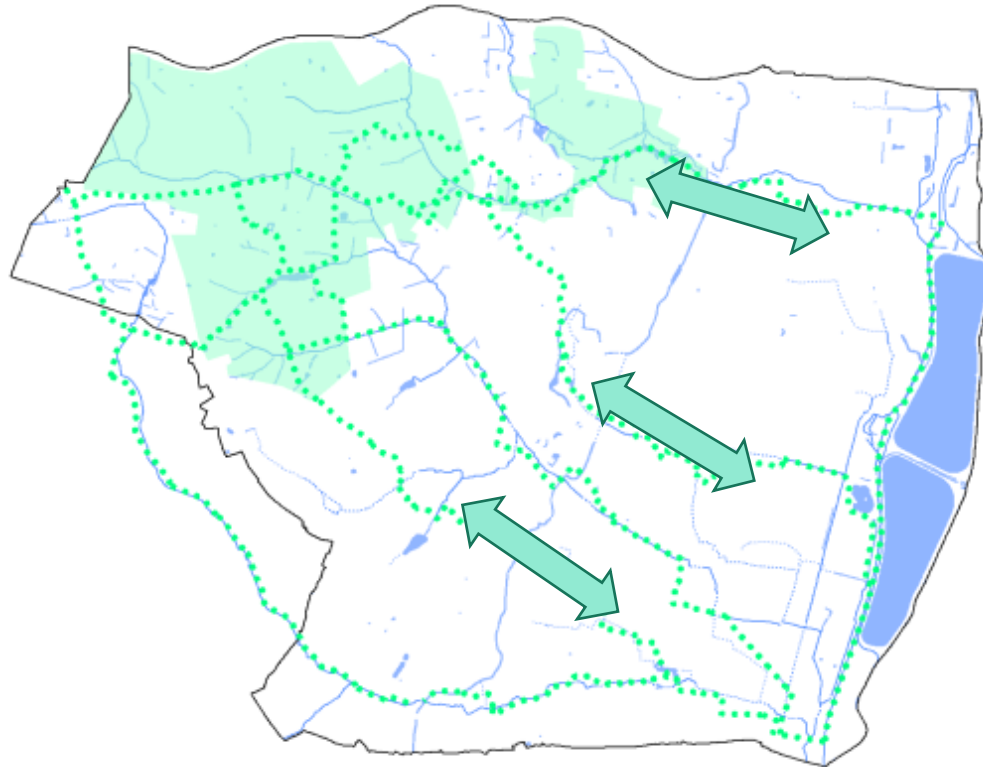
- £1m funding secured to carry out next phase of access improvements
- Linking new woodlands to urban areas and transport hubs

Enfield Chase Emerging Vision

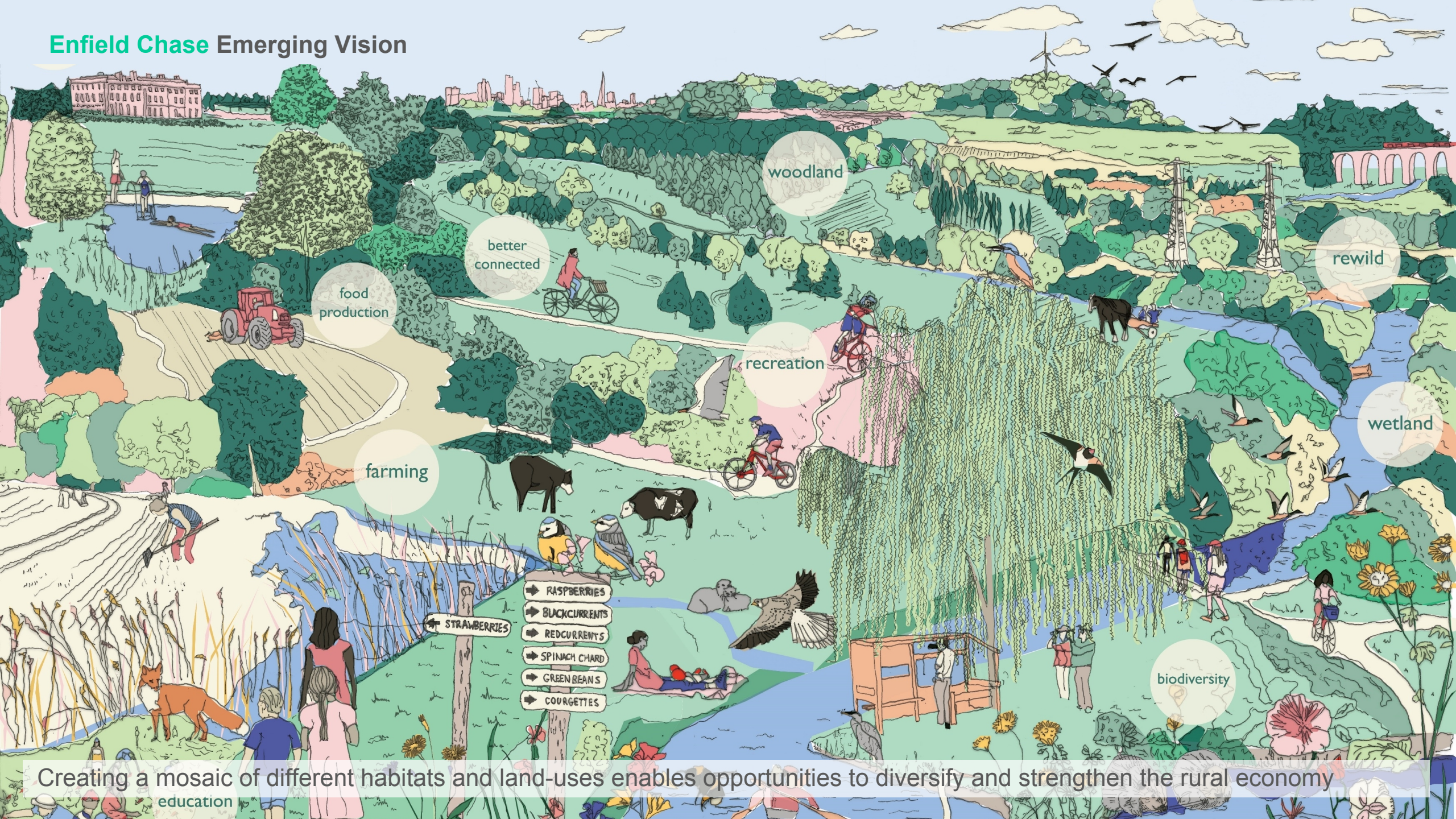
- Restoring the landscape of Enfield Chase to a more natural state creates a wide range of opportunities to benefit people and wildlife

- Key measures include:

1. Creating publicly accessible woodland
2. Restoring rivers and wetlands
3. Reintroducing species such as beavers and large herbivores
4. Improving access by creating a network of footpaths and cycleways linking to public transport and urban areas in the east of the borough



Enfield Chase Emerging Vision



woodland

better connected

food production

recreation

farming

rewild

wetland

biodiversity

- RASPBERRIES
- BLACKCURRANTS
- REDCURRANTS
- SPINACH CHARD
- GREEN BEANS
- COURGETTES

→ STRAWBERRIES

Creating a mosaic of different habitats and land-uses enables opportunities to diversify and strengthen the rural economy

education

2023 Ashden Awards

Ashden Award for Local Nature Recoverers

Winner

**Enfield Council and Thames21
UK**



In North London, **Enfield Council** and environmental charity **Thames21** have protected communities from extreme weather by bringing new life to neglected waterways.

